



Cable and Parameter configurations for **FANUC** controls

Contents

Pocket DNC settings

Fanuc Cable

Fanuc 6 series data and parameter settings

Fanuc 3 series data and parameter settings

Fanuc 0 series data and parameter settings

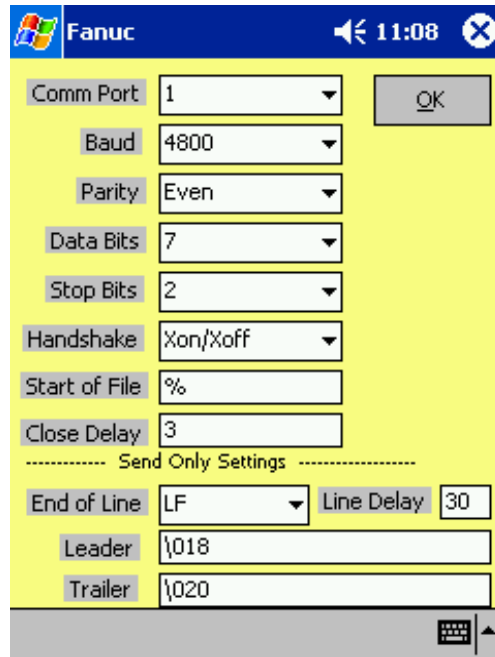
Fanuc 10/11/12 series data and parameter settings

Fanuc 16/18 series data and parameter settings

Pocket DNC

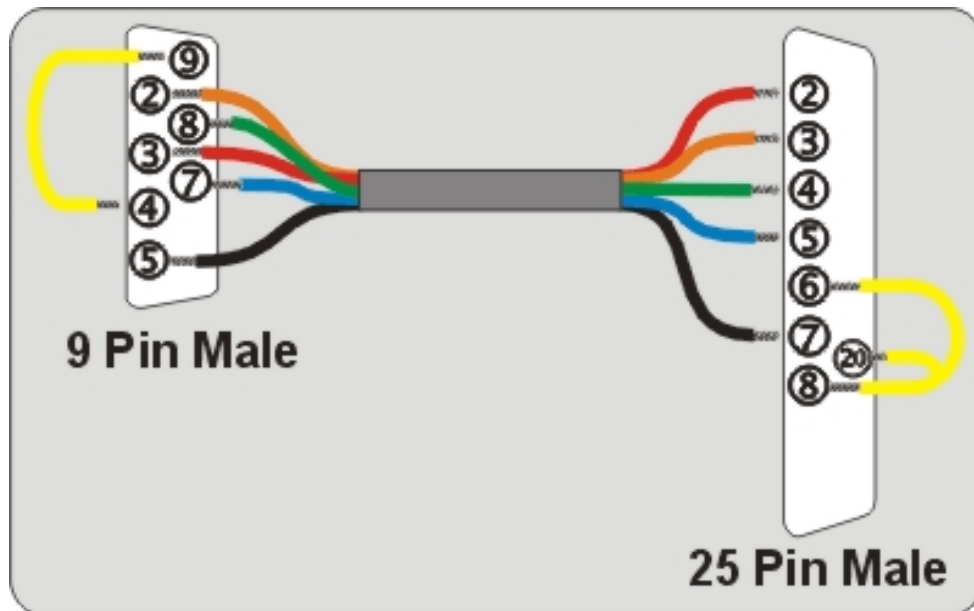


Pocket DNC Settings



Standard setting file for Fanuc controls

Fanuc Cable





Warning

Only competent operators should make changes to machine setting data and parameters. Before changing any parameters please make a note of what they are currently.

Fanuc 6 Series

Setting Data

TV CHECK	=	0	(0 : OFF 1: ON)
PUNCH CODE	=	1	(0 : EIA 1: ISO)
INPUT UNIT	=	0	(0 : MM 1 : INCH)
INPUT DEVICE 1	=	1	(0 : TAPE 1 : RMT)
INPUT DEVICE 2	=	1	(1 : RS232)

Parameters

306	*	0	0	0	1	0	*	0
311	0	0	0	0	1	0	0	1
340	2							
341	2							

* leave this bit set to what it is currently

Fanuc 3 series

Setting Data

TVON	=	0	(0 : OFF 1: ON)
ISO	=	1	(0 : EIA 1: ISO)
I/O	=	0	

Parameters

0005	0	0	0	0	0	0	0	1
0068	4800							



Fanuc 0 series

Setting Data

TVON	=	0	(0 : OFF 1: ON)
ISO	=	1	(0 : EIA 1: ISO)
I/O	=	0	

Parameters

0002	0	0	0	0	0	0	0	1
0552	10							

Fanuc 10/11/12 series

Setting Data

TV CHECK	=	0	(0 : OFF 1: ON)
PUNCH CODE	=	0	(0 : ISO 1: EIA)
INPUT DEVICE	=	1	(1~3 : RS232; 11 : ASR; 13 : RS422)
INPUT DEVICE	=	1	(1~3 : RS232; 11 : ASR; 13 : RS422)

Parameters

5001	1
5110	1
5111	2
5112	10

Pocket DNC



Fanuc 16 & 18 series

Setting Data

TV CHECK	=	0	(0 : OFF 1: ON)
PUNCH CODE	=	1	(0 : EIA 1: ISO)
I/O CHANNEL	=	0	(0~3 : CHANNEL NO)
TAPE FORMAT	=	0	(0 : NO CNV 1 : F15)

Parameters

0000	0	0	0	0	0	*	1	0
0020	0							
0100	0	0	0	0	0	0	0	0
0101	1	0	0	0	0	0	0	1
0102	0							
0103	10							

* leave this bit set to what it is currently